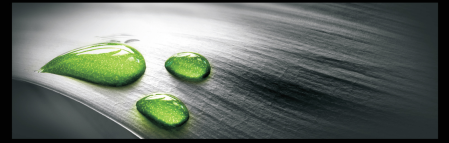




MINTDEVICES



"Leaders in Minimally Invasive Technology"



COLPOSCOPES

FOCUS ON PRECISION.



SEILER 900 SERIES LED COLPOSCOPES



KEY FEATURES

- Smooth, 3-Step or 5-Step Turret Magnification System
- LED Illumination System
- APOchromatic Lenses
- 175-400mm Working Distance Objective Lens
- Digital, Live Video and/or Image Capture System Available
- Widefield Eyepieces
- Straight Binocular Head (Optional: Fixed Inclined or Inclinable)
- Green Filter
- Lifetime Warranty on Optics and Mechanics



935 3-Step Colposcope

Small Diameter Base on Roller Casters
with Adjustable Vertical Post Height
3 Levels of Magnification



955 5-Step Colposcope

Comfort Mounting on Swing Arm Base
Provides Small Footprint
5 Levels of Magnification



985 OTS Colposcope

Over-the-Shoulder Mounting Removes
Obstructions from the Working Field
5 Levels of Magnification

Live Capture of HD Images and Video Available on All Models



1080P HD
STREAMING VIDEO



DIGITAL DSLR
CAMERA
(Sony, Canon, or Nikon)



CCD S-VIDEO
CAMERA
(Use with Image Capture
System)

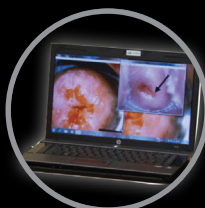


IMAGE CAPTURE
SYSTEM
(Requires CCD Video Camera)



FIXED 45° HEAD FOR
HRA PROCEDURES



GO PRO HERO 4
(Specially modified)

MINTDEVICES



"Leaders in Minimally Invasive Technology"

Mint Devices (Australia) Pty Ltd
PO Box 290 Potts Point NSW 2011
+61 2 8090 0994
info@mintdevices.com.au
www.mintdevices.com.au

SEILER
MEDICAL DIVISION

info@seilermicroscopes.com.au
www.seilermicroscopes.com.au
www.mintdevices.com.au