

# DENTAL

## MICROSCOPES



FM 680767

 **SEILER**  
MEDICAL DIVISION

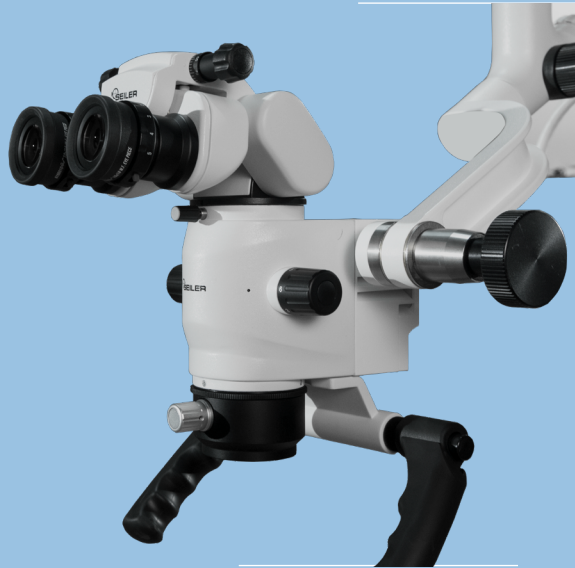


## ALPHA AIR 3

- » 0-220° Inclined Binocular Head
- » Optional: 45° Fixed Incline Head
- » 3-Step Turret Magnification System
- » LED Illumination + 150,000 lux
- » 10x Widefield Eyepieces with Dioptic Locks
- » Optional: 12.5x, 16x, and 20x
- » Objective Lens: 175mm, 200mm, 250mm, 300mm, and 400mm
- » Optional: Vario Focus Lens (200mm–350mm)
- » USB and 12 VDC Power Support Directly on Optic Pod
- » True Coaxial Illumination
- » Composite and Red Free Filter Standard
- » Large Selection of Accessories Available

## ALPHA AIR 6

- » 0-220° Inclined Binocular Head
- » Optional: 45° Fixed Incline Head
- » 6-Step Turret Magnification System
- » LED Illumination + 150,000 lux
- » 10x Widefield Eyepieces with Dioptic Locks
- » Optional: 12.5x, 16x, and 20x
- » Objective Lens: 175mm, 200mm, 250mm, 300mm, and 400mm
- » Optional: Vario Focus Lens (200mm–350mm)
- » USB and 12 VDC Power Support Directly on Optic Pod
- » True Coaxial Illumination
- » Composite and Red Free Filter Standard
- » Large Selection of Accessories Available
- » Six Mounting Options Available: Floor, Fixed Floor, Wall, High Wall, Ceiling, Tabletop



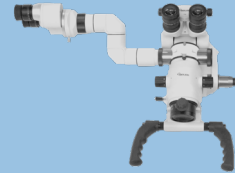
## EVOLUTION ZOOM

- » Objective Lens: 200mm–400mm
- » Eyepieces: 10x, 12.5x, and 20x
- » Field of Vision: 14mm–70mm
- » Illumination Field: 70mm
- » LED Illumination Brightness in the Working Area at Full Power: 100,000 lux (min.)
- » 0-220° Inclined Head
- » Motorized Focus
- » Motorized 1:6 Zoom



# ACCESSORIES

### ASSISTANT TEACHING HEAD



### BEAMSPLITTER



### DSLR CAMERA ADAPTER



### EXTENDER ROTATION DEVICE



### HD LIVE VIDEO CAMERA



### IRIS DIAPHRAGM



### LASER FILTERS



### GO PRO HERO

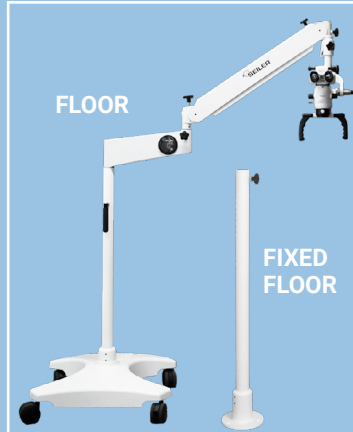


### VARIO FOCUS



# MOUNTING OPTIONS

### FLOOR



### FIXED FLOOR



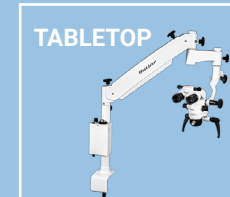
### CEILING



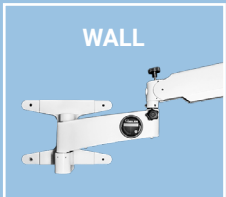
### HIGH WALL



### TABLETOP



### WALL





# MAGNIFICATION & ILLUMINATION



Unique to the industry, Seiler microscopes allow for up to 6 steps of magnification. With this enhanced precision in magnification, Seiler microscopes improve the overall quality of work dentists are performing.

Seiler microscopes boast some of the brightest LED illumination in the industry at 150,000 lux, while maintaining a 50,000-hour life on the LED bulb.

*"The Seiler Alpha Air product offers the best light source I've ever used. The scope allows me to see things I've never seen before. Seiler's product should be considered one of the top microscopes on the market."*

~ Dr. Nathan Woods, DDS, Endodontist | Mesa, AZ

# VIDEO CAPTURE



Seiler's microscopes have a built in USB port and a 12-volt power supply, allowing for more continuous use without recharging the camera's battery supply. By accommodating a full HD video camera able to capture 4K video, dentists can have better discussion with patients about their concerns. This type of communication helps dentists build more trusting relationships with patients so they do not feel like they're being pressured into unnecessary treatments.

*"Clinical documentation is one of the most powerful tools in dentistry. Through digital imaging and video recording, the clinician has a wide range of possibilities, going from clinical explanations for patients to using the digital material for educational purposes."*

~ Dr. Jenner Argueta Zepeda, DDS, Endodontist | Guatemala City, Guatemala



# ERGONOMICS



Roughly 80% of practicing dentists are over the age of 40, making optimal ergonomics a critical element. Practicing in a field where musculoskeletal disorders are not uncommon, dentists need to be assured that whichever microscope they choose promotes optimal working posture.

Seiler microscopes ensure the dentist practices in an upright, working posture while keeping visual contact with patients.

*"I've been using Seiler microscopes for a couple of years now. By nature of their design, they help my posture greatly, avoiding muscular injuries, especially on my neck and waist, which have been a big concern for me early in my career since I am a former rugby player. The microscope allows me to sit up in a relaxed position while looking through the infinity corrected optics and change the magnifications instantaneously without visual noise or shadows. This helps me provide my patients precise and predictable endodontic procedures while working comfortably for a longer period of time."*

~ Dr. Sergio A. Rosler, DDS, Endodontist | Buenos Aires, Argentina

# APPLICATIONS



## RESTORATIVE DENTISTRY

"The microscope allows the visualization of margins as good - if not better - than what is represented by the CEREC. The better the initial preparation as created with the microscope, the better the end result."

~ Dr. Sameer Puri, Vice President  
CEREC Education  
Scottsdale, AZ



## ENDODONTICS

"The higher magnification, along with Seiler's powerful LED lighting, gives me the ability to predictably locate and treat anatomy, such as MB2 canals, isthmuses, etc."

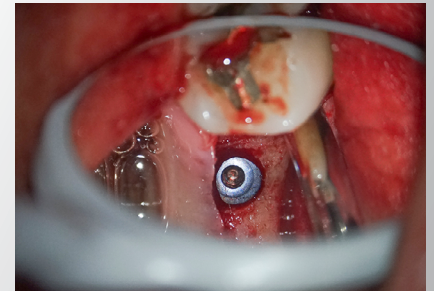
~ Dr. Freddy Belliard  
DDS, Endodontist  
Guadalajara, Spain



## IMPLANTOLOGY

"Seiler's microscope is essential for inspecting and managing soft and hard tissue when an extraction precedes an implant placement."

~ Dr. Kayvon Javid  
DICIO, FCII, AFWCLI, CPT1,  
Implantologist



## PERIODONTICS

"The microscope allows me to place my implants and perform bone grafting in a much more efficient manner with the added magnification."

~ Dr. John C. Boain  
DDS, FAGD, AFAAID  
St. Louis, MO

*"I am firmly committed to the use of magnification and illumination in clinical dentistry, and Seiler's dental microscopes certainly tick those boxes."*

~ Dr. Mike Horrocks, BDS MSc, Endodontist | Manchester, UK





[info@seilermicroscopes.com.au](mailto:info@seilermicroscopes.com.au)

[www.seilermicroscopes.com.au](http://www.seilermicroscopes.com.au)



Mint Devices (Australia) Pty Ltd  
PO Box 290 Potts Point NSW 2011

[info@mintdevices.com.au](mailto:info@mintdevices.com.au)

[www.mintdevices.com.au](http://www.mintdevices.com.au)

+61 2 8090 0994

